

Welcome to Year 4



Establish - Nurture - Grow

This afternoon we'll be discussing:

- Staff working in Year 4
- The new term and what the children will be learning about
- Timetable
- Communication platforms
- Year group page on the website
- School Life app
- Assessment
- Homework
- Spellings
- PE/Forest School sessions
- Reading expectations
- Trips, Themed Days and Special Events (Academic Diary Dates)
- How parents can best support their child's learning



Staff working in Year 4



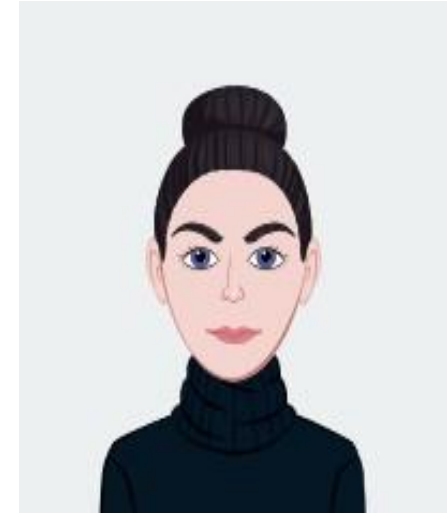
Mrs Mulligan



Mrs Cooke

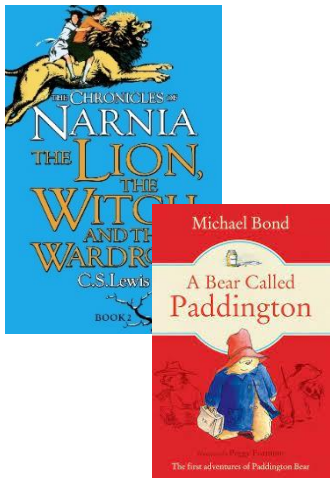


Miss Liao



Miss Harris





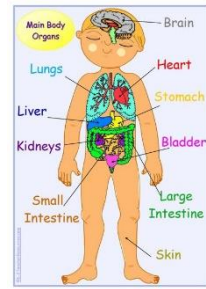
Class Novels
The Lion, The Witch and The Wardrobe
A Bear called Paddington



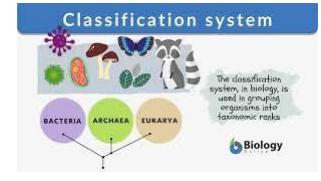
Forest School



Maths
Place value
Addition and Subtraction
Multiplication and Division
Fractions

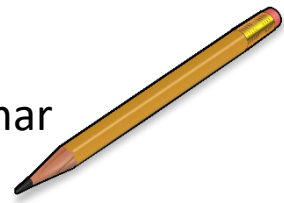


Science
The Human Body
Classification of Plants and Animals

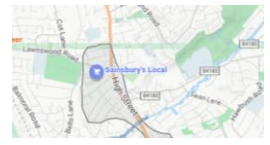


**Year 4
Autumn Term**

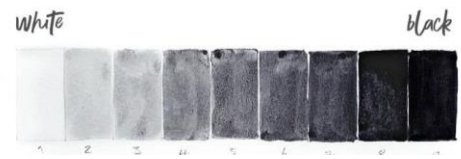
English
Sentence and Grammar structures
Once upon a picture



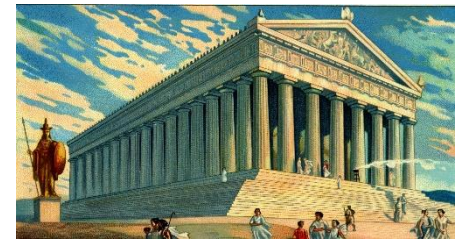
Geography
Spatial Sense
Mediterranean Europe



Art
Light
Space (object)



Computing
Coding



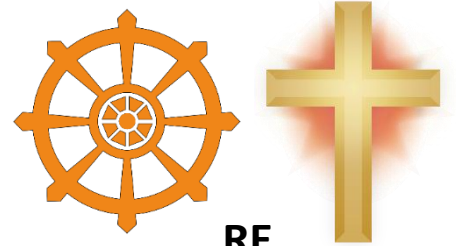
History
Ancient Greece



PE
Handball
Tag Rugby



Music
Mamma Mia



RE
Judaism and Christianity

Our weekly timetable

	8.50 8.55	9.00 9.15	9:15 10:05	10:05 10:25	10:25 10:40	10:45 11:00	11:05 11:30	11:30 12:15	12.15 1.15	1.15 2.15	2.15 3.15	3.15 3.30
Mon	Registration	Handwriting	Maths	Assembly	Break	Spelling	Reading Class Novel	English	Lunch	Science	PSHE	Class Novel
Tues		Handwriting	Maths	Assembly		Spelling	Reading Class Novel	English		Art	MFL	Times Table Practise
Wed		Handwriting	Maths	Assembly		Spelling	Reading	English		History	RE	
Thurs		Handwriting	Maths	Assembly		Spelling	Reading	English		Geography	Computing/Music	
Fri		PE/Forest School	PE/Forest School	PE/Forest School		PE/Forest School	PE/Forest School	PE/Forest School		Spelling Test	English	Maths

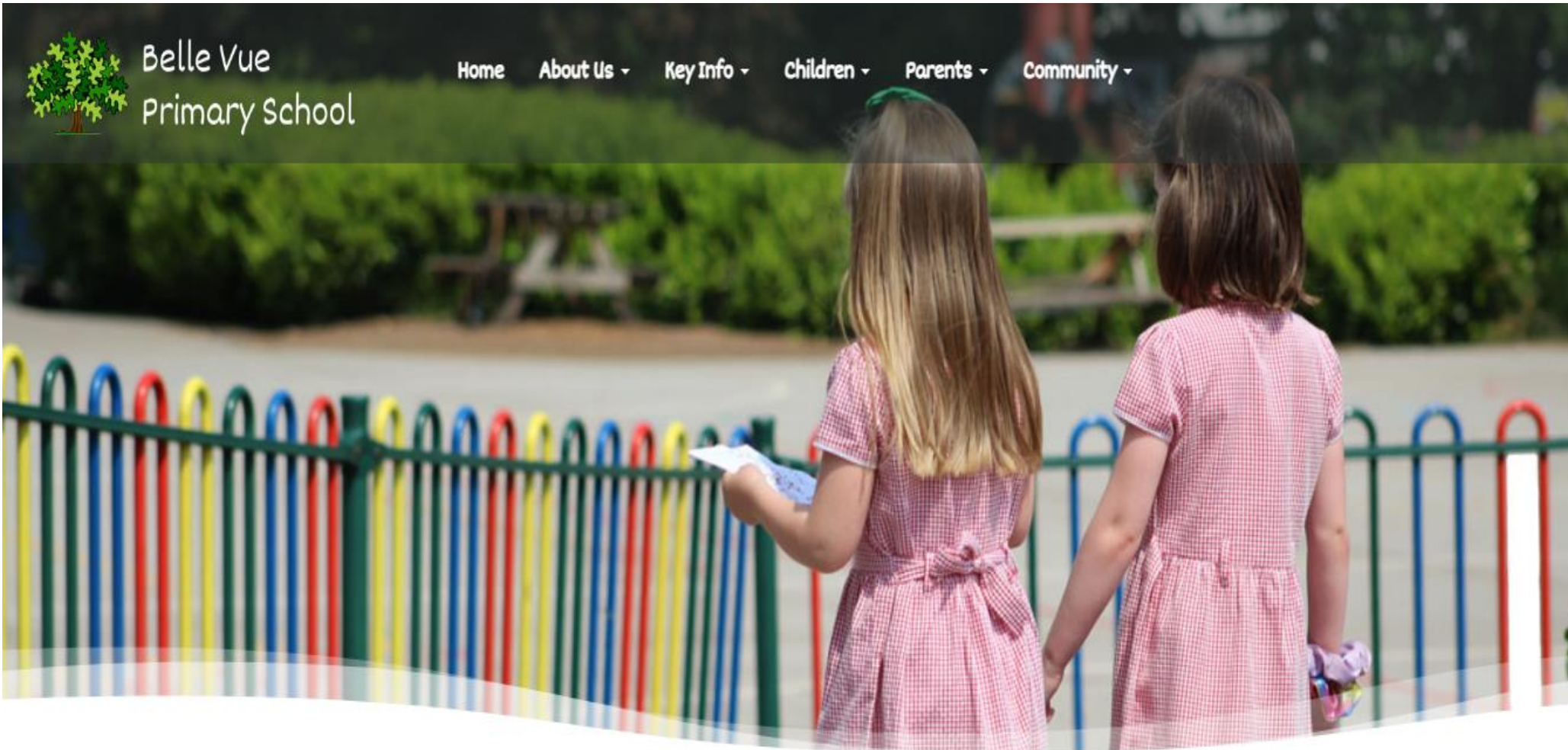


Communication Platforms

- Key messages for parents will be communicated by the school office via School Life App.
- Copies of letters are sent out to parents via emails and uploaded to the school website.
- Key dates are published on our website (Academic Diary Dates)
- Google Form links that can not be shared publicly for safeguarding reasons will be emailed to families.
- Newsletters will be issued every fortnight and available on the School Life app and uploaded to the website.



Year Group page on our website



Establish - Nurture - Grow





Belle Vue
Primary School

[Home](#)

[About Us](#) ▾

[Key Info](#) ▾

[Children](#) ▾

[Parents](#) ▾

[Community](#) ▾

[Year groups](#)



Establish - Nurture - Grow



Year groups



Nursery

Nursery



Year 4

Year 4



Year 5

Year 5

School Life App

- News/updates/information and reminders will be sent via School Life App
- All parents will have their own log in details. These will be issued shortly. If you do not receive yours, please contact the office.
- Parent Evening appointments will be booked via the School Life App
- Newsletters will be sent out via the School Life App
- Messages can be sent to individual parents/teacher via the School Life App. Please note that staff will only read/respond/send messages during their official working hours.



Assessment

- We are assessing your children all the time in various ways.
- Our questions and activities are planned to help us constantly assess whilst we are teaching.
- Children will sit termly NTS assessments in Maths, Reading and GaPS. Some children will also sit Phonics assessments.
- Fluency assessments in Reading.
- MCQ in Art, Geography, History and Science (results recorded)
- Writing is teacher assessed every half term
- In year 4, children will also take the Multiplication timetable check, which will take place in summer term.



Homework

•

 Our KS2 homework is 

SMART!

Spellings
Practise and learn your spellings. Can you spell them independently? Do you know what they mean? Can you include them in a sentence? 

Multiplications & maths games
Learn your times tables so that you are fluent with them. Complete maths games on the internet (links are on the school website). 

Additional tasks or activities
These tasks might not be every week but are set by your teacher to help you with your learning. They might involve reading, finding out about a topic or learning facts. 

Readng
It is really important to practice your reading every day. Reading is the best thing to help you build your confidence and improve learning. 

Termly tasks
Your teacher will set you 1/2 termly tasks to complete. It might be a practical project, fact file or something completely different. 

e with our SMART homework policy.

www.timetables.co.uk – multiplication
check practice tests

Hit the Button (Top Marks website)

Spelling- Top Marks website
Superbrainybeans website



Spellings

- Any statutory spelling lists and spelling word lists for a year group will be on year group pages (KS2 only)
- Spellings are taught phonetically, using phonemes and graphemes
- Children are taught a phoneme and then each year group focuses on certain graphemes that represent that phoneme.
- Over a week, children will look at, at least 12 words containing the phoneme focus
- On a Friday, the children will sit a spelling test on those 12 words and a further 3-10 taken from the same phoneme focus but a previous year group word list.



Handwriting

- We use the handwriting scheme 'Letter Join'. Handwriting is taught daily and children have chance to practise the letters/joins.
- We expect children to use and implement the letters/joins they have learnt in handwriting, in their independent writing in all lessons.
- The following username and password will let you log on to Letter Join at home:

Pupil Log-in:

Tablet log-in
User name: qr0470
Swipe code: A capital 'L' shape starting at top left.



PC log-in
User name: qr0470
Account Password: home

MDM log-in
If you are using an MDM system, please copy the following link: [MDM Login Link](#)
You can use the following file for the icon: [Icon Link](#)

Free Play for Pupils: ▾

If you have changed the Class Names (see below), you can disable the Free Play option for pupils so they only choose a Class Name.

PE /Forest School sessions

- P.E is on a Friday- Miss Liao's class first half term
- Forest School is on a Friday- Mrs Mulligan's and Mrs Cooke's class first
- Hair will need to be tied back
- ALL children must have the correct PE kit. Please see letter sent from Miss Monk at the start of the term.
- Earrings must be removed on the days children have PE (if they have not been removed then they must be taken out by the child themselves or covered with plasters)
- Long trousers for Forest School and preferably long sleeve tops.
- Please make sure children also always bring in a waterproof coat for Forest School and dress appropriately for the current time of year.
- Children to come into school in either Forest School clothes or PE kit. They will remain in those for the whole day.
- Please send a set of spare clothes in, when your child has Forest Schools, in case they get extremely wet or dirty.
- If it is a part/whole non-uniform day, then the children can bring in the alternative items to change into for the remainder of the day, should they wish.



Reading expectations

- Children should be taking their reading book home every night and reading at home every day
- Even 10 minutes before bedtime will help children increase their range of vocabulary!
- We will be organising school reading books to send home this week. Children will be able to choose from a set reading-age range.

“The more you **read**
the more **things** you know.
The more that you **learn**
the more **places** you’ll go.”
-Dr. Seuss



Trips, Themed Days and Special Events

Autumn

- Ancient Greece - Greek Theme Day (date to be confirmed)

Spring

- Frank Chapman Centre Residential (4th-6th March 2024)

Summer

- Visit to a place of Worship (date to be confirmed)



How parents can best support their child's learning

- Reading before bed
- Daily times tables practise
- Spelling practise
- Handwriting practise
- Encouraging independence



Any questions?

- If you ever need a chat/ meeting, please contact us via the info@ email info@belle-vue.dudley.sch.uk
- If your query is regarding school administration, please telephone the office (01384 389900) or send an email to the office on info@belle-vue.dudley.sch.uk
- If you need a Designated Safeguarding Lead please contact the school office and ask to speak to Mrs Claire Davies (Deputy Head). If Mrs Davies is not available, you will be able to speak to Mrs Mulligan, Mrs Richardson or Mrs Perrett (Deputy DSLs)

